



## Double Sided Heavy Duty Cantilever Storage Racks , Industrial Cantilever Shelving

### Basic Information



### Product Specification

- Model NO.: Cantilever Racks
- Material: Steel
- Structure: Rack
- Type: Boltless/Rivet Racking
- Mobility: Adjustable
- Height: 1-15m
- Weight: 100-8000kg
- Closed: Open
- Development: Conventional
- Serviceability: Common Use
- Color: Customized
- Lead Time: 20 Days
- Raw Material: Q235
- Surface Treatment: Powder Coating
- Operation: By Forklift Or Stacker



### More Images



Our Product Introduction

for more products please visit us on [warehouse-rackings.com](http://warehouse-rackings.com)

## Product Description

### US Cantilever Rack Customized Double Sided Heavy Duty Stacking Racks for Storage

#### Product Description

Jiangsu Qifei Intelligent Storage Equipment Co., Ltd.



Also called **H beam cantilever rack**, Mainly consists of column, base, arm, straight brace and "X" brace.

#### Features&Benefits

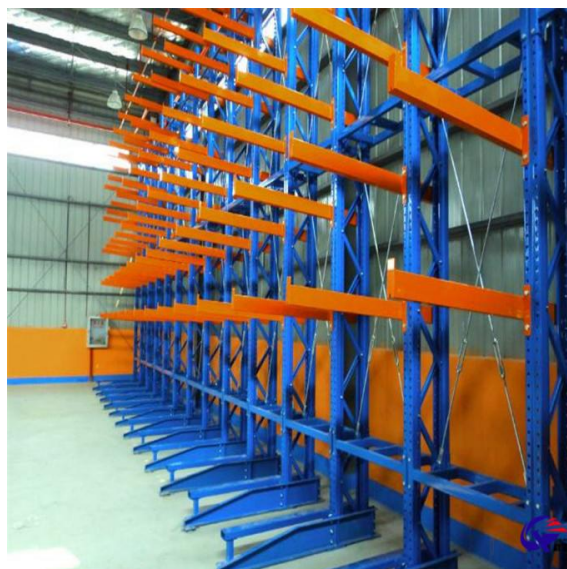
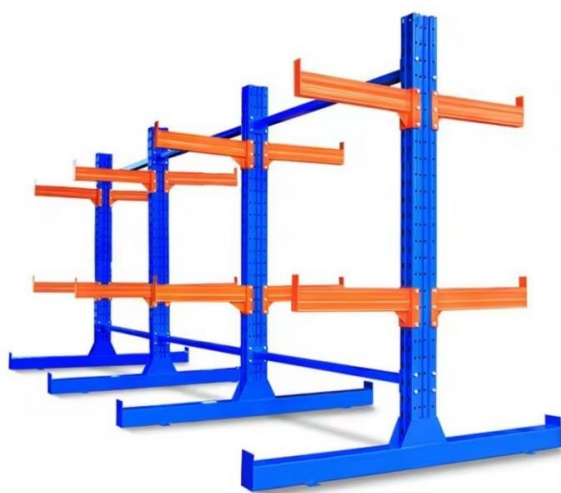
- 1) Simple structure, easy and quick assembled and disassembled
- 2) **Single and double sided** configuration available
- 3) Mainly used for the storage of long stuff such as **rolled section steel, steel tube, plates, wire lines** and so on.
- 4) Bolted arm and base connection
- 5) Made of H type steel or cold rolling steel or frame or square tube
- 6) Loading and unloading of goods can be done manually or by forklifts.
- 7) Selective: direct access to each goods

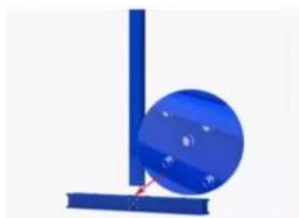
Material	Q235B
OEM&ODM	Available
Surface Treatment	Galvanized/Powder Coating
Sample	Available

#### Required information for quote

- 1, The AUTOCAD drawing or draft drawing of warehouse or racking.
- 2, Length, Height, and Width of the warehouse.
- 3, Layers of the racking
- 4, Pallet size.
- 5, Max weight of pallet with cargo on.
- 6, Color requirement.

#### Detailed Photos





**Step 1: Column inserted into the base and screw fixation**



**Step 2: Install the other side pillar and base**



**Step 3: Install connecting rod**



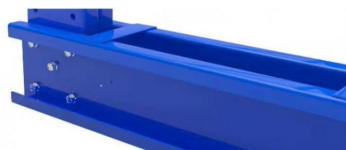
**Step 4: Install the cantilever beam**



**Step 5: Install all the cantilever beam**



**Step 6: Finished**



**BASE**

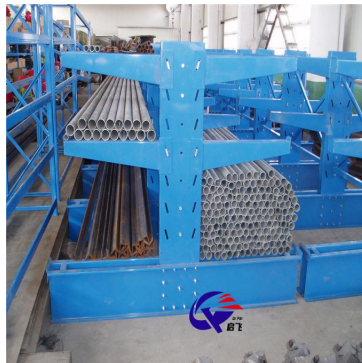


**POST**



**CANTILEVER BEAM**

### Success Case



### Packaging & Shipping





Package for Upright Frame



Package for Beam



Loading for Beam



Loading for Upright Frame



Loading for Wire Mesh Cage

## Company Profile

### Jiangsu Qifei Intelligent Storage Equipment Co., Ltd



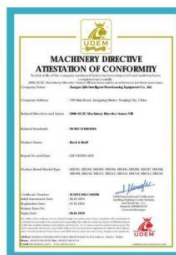
Established in 2020, is one of the leading manufacturer specialized in industrial warehouse storage equipment



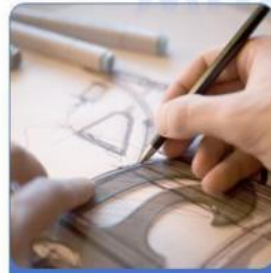
Main products are heavy/medium/light duty rack, cantilever rack, mezzanine floor, drive in rack, and so on.



We aim to provide cost-effective and space utilization storage solutions for all customers worldwide



# WHY CHOOSE US



**Customization**

**WE  
OFFER  
SOLUTIONS**

**Free Design**

**VIP**

**Best Price**

## Co-operation Process



## FAQ

Q: Are you manufacturer or trading company?

A: We are experienced manufacturer in the warehouse storage industry.

Q: How is your delivery time?

A: Generally, it is within 20 days against formal order and deposit. It also depends on other factors such as order quantity.

Q: What is the payment term?

A: T/T 30% as deposit, and 70% before delivery. We'll show you the photos of the products and packages before you pay the balance.

Q: What is your terms of delivery?

A: EXW, FOB

Q: Are samples available?

A: Yes, We can supply the sample if we have ready parts in stock, but the customers have to pay the sample cost and the courier cost.

Q: What is the minimum order quantity?

A: Generally, MOQ is 10sets.

Q: Can I make my own brand and designed products?

A: Yes, we do both OEM and ODM, so you can make your own product with your own logo.

Q: Where is your factory? Can I visit it?

A: Our factory located in Nanjing, Welcome to visit our factory. We can arrange pick-up from the airport or train station for you.

Q: I don't have drawing or picture available for the products, could you design it for me?

A: Yes, we can make the best suitable design for you but need to know more details.

Q: Do I get any guarantee from your company?

A: Yes, 3 years warranty

Q: How do you make our business long-term and good relationship?

A: Quality makes trust and reputation, plus competitive price to ensure our customers benefit ;

## MAIN PRODUCTS



**Jiangsu Qifei Intelligent Storage Equipment Co., Ltd.**



+86-15161451461



sharonyan@qifeirack.com



warehouse-rackings.com

Add: #739 Dixiu Road Jiangning District Nanjing China